



TAKING CARE FROM
THE BEGINNING

PARDO HEALTHCARE STATIC MATTRESSES



WELCOME



+ Pardo

With over 50 years of experience, PARDO is one of the leading international manufacturer of hospital beds and furniture, and a provider of modern smart room solutions for hospitals and nursing homes.

In 2012 PARDO joined the Pikolin Group which is one of the major industrial groups in Europe. With this merge, PARDO has started up a strong national and international expansion strategy with the objective to make PARDO one of the most important international brands of hospital and geriatric beds and furniture.

The ongoing research and development in the aim of finding new solutions is an important issue of our commitment to provide our customers with unique products based on technology and high quality. Therefore, we are in constant contact with nurses, doctors and research centres in order to develop new products solutions that will make a difference in medical centres.

We are proud to have a highly qualified technical team that can solve any type of issue and provide all necessary assistance.

+ Quality and Production

A PARDO essential pillar is to offer wide range and quality products as well as the best service our customers deserve. All the products made in our facilities are thoroughly tested with a quality control machine designed in Pardo, which controls all product functions and quality. This has permitted us to obtain international prestigious certifications that endorse our quality and environmental management systems.

PARDO has modern manufacturing facilities located in Zaragoza (SPAIN), where all our products are manufactured. We only collaborate with approved suppliers, who are revised according to the highest quality standards. Our modern, flexible and advanced production is based on principles of efficiency, what means that we can customize our production very quick and effectively to meet our customer's needs.





CONTENTS

MATTRESSES

ICU

DENSITY 900

BARIATRICS

DENSITY 850

DENSITY 800

HEALTHCARE

DENSITY 650 FRESH

DENSITY 600

DENSITY 475 FRESH

DENSITY 450

DENSITY 400 i

DENSITY 400

DENSITY 250 FRESH

DENSITY 150

PEDIATRICS

DENSITY 150 NEO

DENSITY 150 PEDIATRIC

DENSITY 450 PEDIATRIC

COVERS

CUGAR

SELECT

EXCLUSIVE

ELEGANCE

PILLOWS

SYNTHETIC FIBRE

VISCOELASTIC

LATEX

PEDIATRIC

STATIC MATTRESSES

+ A Quality Mattress For All

In Pardo, when we offer a mattress for hospitals or nurse houses, we work based on the basic principles focused on the patients: Pressure relieve, minimize ulcerations, improve the infections control and make the patient hospital stay more pleasant safe and sustainable.

We believe that the patients should have the option to rest on a quality mattress with a correct application, making his hospital stay comfortable and with a rapid recovery.

Most people don't take in count how important is to have the correct mattress with efficient medical characteristics to optimize the patient recovery without suffering ulcers and other injuries produced by the mattresses.

In such way, we have designed and developed 14 new generation mattresses with various combinations of foams and visco with different densities, to adapt it to any patient under all possible hospital or nurse house application, from a long stay in ICU, to a short stay in a hospital room.

	Model	Num. of layers	Foam kind	Ulceration risk	Max. weight	Upper profiling	Fireproof	Simetric
ICU	Density 900	3	HR + Visco	I - Very high	250 kg.	Yes	No	Yes

	Model	Num. of layers	Foam Kind	Ulceration risk	Max. weight	Upper profiling	Fireproof	Simetric
Bariátricos	Density 850	2	HR + Visco	II - High	300 kg.	Yes	No	No
	Density 800	2	HR + Visco	III - High	300 kg.	No	Yes	Yes










	Model	Num of layers	Foam kind	Ulceration risk	Max. weight	Upper profiling	Fireproof	Simetric
HealthCare	Density 650 Fresh	3	HR + Visco	II - High	250 kg.	No	Yes	No
	Density 600	3	HR + Visco	II - High	250 kg.	Yes	No	Yes
	Density 475 Fresh	2	Biogreen+ Visco	II - High	230 kg.	Yes	No	Yes
	Density 450	2	HR + Visco	III - Medium	230 kg.	Yes	Yes	Yes
	Density 400 i	2	HR + Visco	III - Medium	230 kg.	No	Yes	Yes
	Density 400	2	HR + Visco	III - Medium	230 kg.	No	No	Yes
	Density 250 Fresh	1	Biocell	IV - Low	190 kg.	No	No	Si
	Density 150	1	HR	IV - Low	190 kg.	Yes	No	Yes

	Model	Material	Fabric	Weight	Waterproofing	Fireproof	Anty-allergic	Heat-sealed
Covers	Cugar	Polyester + Polyurethane	Two-way stretch	175 g/m ²	> 200 cm.	Yes	Yes	Yes
	Select	Polyester + Polyurethane	Two-way stretch	190 g/m ²	> 500 cm.	Yes	Yes	Optional
	Exclusive	Polyester + Polyurethane	Elastic	160 g/m ²	> 180 cm.	Yes	Yes	Optional
	Elegance	Polyester + Cotton	Elastic	188 g/m ²	No	No	Yes	No

+ References

- Project “Análisis y Evaluación Ergonómica de una Cama Articulada y Propuestas de mejora” carried out by the Instituto de Investigación en Ingeniería de Aragón de la Universidad de Zaragoza in cooperation with Industrias Pardo.
- Article “Pressure ulcer prevention and healing using alternating pressure mattress at home: The Parestry project” on August the 8th, 2015, on the 24th volume of the Journal of Wound Care.
- Project “Gestión Integral de Superficies Especiales para el manejo de la Presión (SEMP) en el Hospital Clínico San Carlos”.
- Test and study reports made with the Ergocheck program in Industrias Pardo / Grupo Pikolin

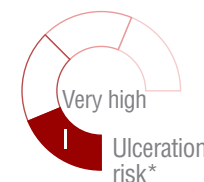
Especially recommended beds

	Density 900	Density 850	Density 800	Density 650 fresh	Density 600	Density 475 fresh	Density 450	Density 400i	Density 400	Density 250 fresh	Density 150
 Hitech	●			●							
 Newcare3				●	●	●	●				
 Technoplus	●			●	●	●	●				
 Newcare				●				●	●		
 NC Bariatrica		●	●								
 Newcare V2										●	●
 Ágora					●		●	●	●		
 Egeo				●			●	●	●		
 ClassicXL		●	●								



MATTRESSES

DENSITY 900



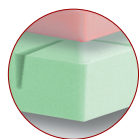
+ Mattress characteristics

Encapsulated mattress developed for therapeutic use in hospital environment, for patients with chronic pain with very high ulceration risk, as well as for mitigate pressure ulcers or sores up to stage III.

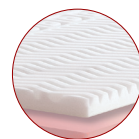
+ Technical specifications

Core weight	10'5 kg.	Ulceration risk	I - Very high
Core height	16 cm.	Available widths	80/85/90 cm.
Maximum patient weight (MPW)	250 kg.	Available lengths	180/190/200 cm.

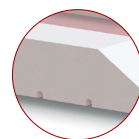
+ Core



1. Polyurethane foam HR (30 kg/m³) lower layer. Base with 8cm. height. High porosity, which allows a high breathability and hygiene, avoiding humidity and maceration



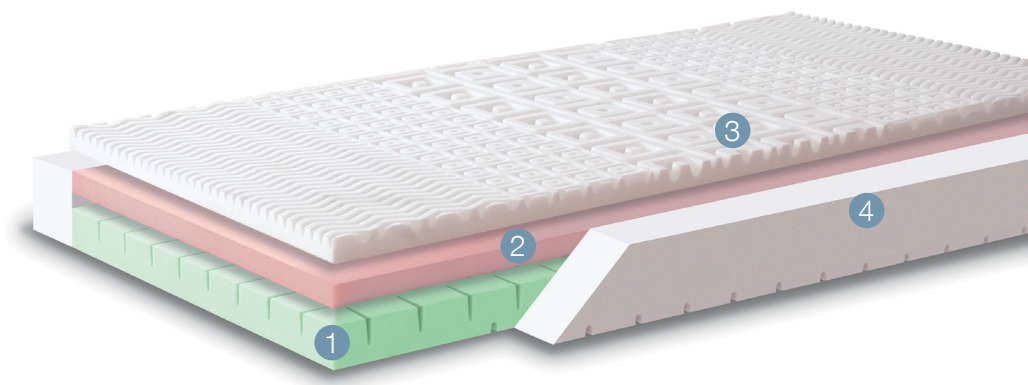
2. Intermediate layer on HR polyurethane foam of 4cm. With more density at the base (35 kg/m³), that provides better comfort and stability.



3. Upper layer made of thermo sensible viscoelastic foam (50kg/m³), 4cm. height. In contact with the body, the viscoelastic foam turns softer, keeping the same supporting level and endowing an excellent comfort levels.

4. HR polyurethane foam (40 kg/m³) frame. With 16 cm. height and 10 cm. width

+ Core characteristics



- The foam frame reinforces the mattress, ensuring the patient stability whilst turning on himself, guaranteeing the durability against the perimeter efforts and improving the comfort when sitting at the bed side.
- Upper layer conformed with different patterns, divided in 5 sections, depending on patients pressure areas, to improve the blood circulation and pressure of the patient.
- Mattress base framed, for an optimal adaptability of the mattress core.
- Transversal frame in the upper side of the base, for better patient comfort, increase elasticity and breathability of the core.
- All foams are Oeko-Tex class I and REACH certified.
- Symmetric core allows using indistinctly the head or feet areas
- OPTIONAL: Cut the mattress corners for better adaptability to beds.

+ Pressure map

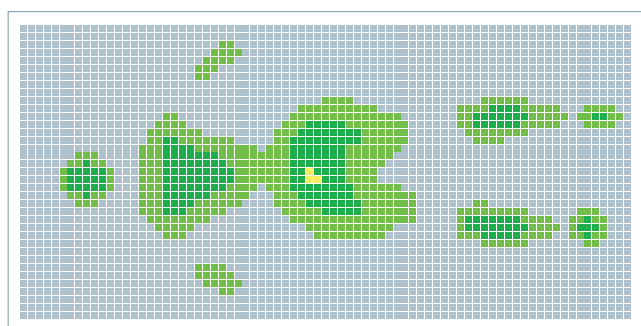
The contact pressure test shows that a Model user keeps in contact most parts of the body, no matter in the whatever position is taken, consequently there is a large contact surface between the mattress and the user, avoiding high pressure points that may cause pressure ulcers (bedsores).

The test prove that it is a mattress ideal to be used with long term bed-ridden patients, as it is very comfortable and adapted to the patient.

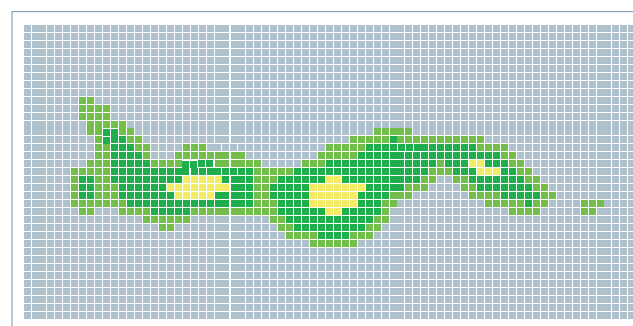
In positions such as supine or Fowler, the medium pressure showed didn't exceed 6 mmHg.

In other positions, lateral or seated, the Model didn't overcome 80 mmHg. on average, but it could be observed in the graphics the highest pressure points (17 mmHg.) on hip and shoulders areas.

Furthermore, for a greater patient comfort, this mattress is designed to be use preferably with phenolic bed bases.

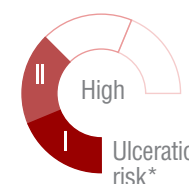


Gender: Female. Weight: 65kg. Height: 170cm.



Gender: Female. Weight: 65kg. Height: 170cm.

DENSITY 850



PolyurethaneHR + Viscoelastic



40kg HR foam density



85kg Viscoelastic density



100% NATURAL LATEX FREE



THERMO-ADAPTABLE material



BREATHABLE material



Anti-allergy material



Heel-Relief

Standard Therapeutic

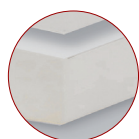
+ Mattress characteristics

Specially designed mattress to be used in hospital and health centres, for bariatric patients with high ulceration risk, as well as for mitigate pressure ulcers or sores in medium stage.

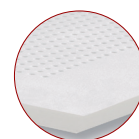
+ Technical specifications

Core weight	18 kg.	Ulceration risk	II - High
Core height	18 cm.	Available widths	100/105/120 cm.
Maximum patient weight (MPW)	300 kg.	Available lengths	190/200 cm.

+ Core



1. High density polyurethane foam based core (40 kg/m³) with a microcellular structure, that allows the air circulation in the inside, avoiding humidity. Height 14 cm.



2. Upper layer made of high density (85 kg/m³) viscoelastic, MF. Mind Foam, with open cells sensitive to weight and body temperature. 4 cm. height.

+ Core characteristics



- La MF. Mind Foam, is able to adapt itself perfectly to the body form and anatomic position, creating favourable and pleasant feeling of wellness, due to its slow return.
- Perforated viscoelastic foam by Airform System, to provide different firmness to the mattress depending on the areas where most pressure is going to be made, and also an air circulation improvement and avoids patient maceration.
- To provide more firmness in the body area with more weight practiced, lumbar area, fewer perforations are performed.
- Heel-Relief area, lower section slightly decreased, to prevent the pressure increase on heels and avoid ulcers generation.
- All foams are Oeko-Tex class I and REACH certified.
- Mattress base framed, for an optimal adaptability of the mattress core.
- OPTIONAL: Cut the mattress corners for better adaptability to beds

+ Pressure map

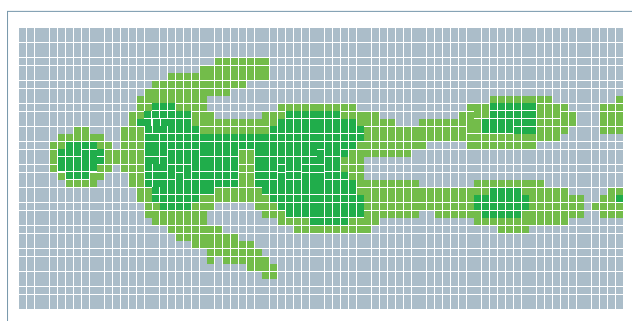
The contact pressure test shows that a Model user keeps in contact most parts of the body, no matter in the whatever position is taken, consequently there is a large contact surface between the mattress and the user, avoiding high pressure points that may cause pressure ulcers (bedsores).

The test prove that it is a mattress ideal to be used with bariatric patients, who has to stay long time in bed, as it is very comfortable and adapted to the patient.

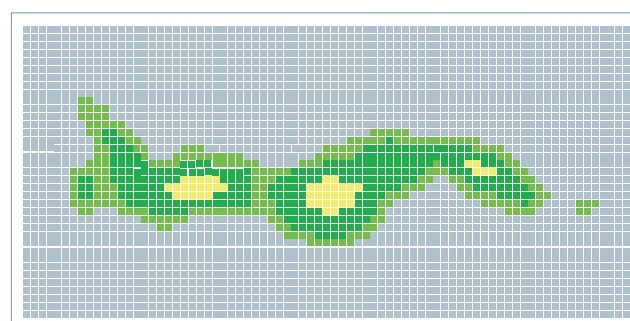
In positions such as supine or Fowler, the medium pressure showed didn't exceed 6 mmHg.

In other positions, lateral or seated, the Model didn't overcome 18 mmHg. It is recommended not overcome 32 mmHg.

Furthermore, for a greater patient comfort, this mattress is designed to be use preferably with phenolic bed bases, due to its high firmness.

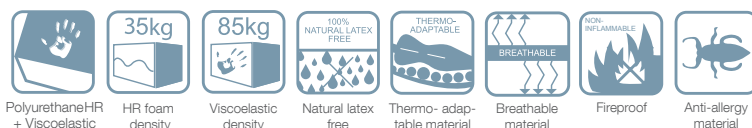
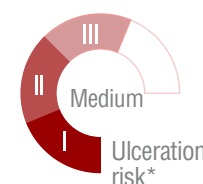


Gender: Female. Weight: 95kg. Height: 170cm.



Gender: Female. Weight: 95kg. Height: 170cm.

DENSITY 800



+ Mattress characteristics

Specially designed mattress to be used in hospital and health centres, for bariatric patients with medium ulceration risk, as well as for mitigate pressure ulcers or sores in medium stage..

+ Technical specifications

Core weight	15 kg.	Ulceration risk	III / Medium
Core height	16 cm.	Available widths	100/105/120 cm.
Maximum patient weight (MPW)	300 kg.	Available lengths	190/200 cm.

+ Core



1. Core with HR polyurethane foam base, Freefoam (35 kg/m³). High porosity foam, that allows the air circulation through the foam, avoiding humidity and patient maceration; Height 10 cm.



2. Upper layer made of high density thermo-sensitive viscoelastic foam (80 kg/m³) with 6 cm. height, high adaptation capacity, achieving a large contact surface with the patient, reaching low capillary occlusion levels, avoiding the PU's appearance.

+ Core characteristics



- Framed lower mattress layer for an optimal patient pressure whilst it is placed in bed. High adaptability of the mattress to the bed, promoting its articulation.
- Fireproof core according to the “Furniture and Furnishings (Fire)”, BS 5852:2 CRIB2, UNE EN 597-1 and EN 597-2 regulations.
- All foams are Oeko-Tex class I and REACH certified.
- Suitable for patients with medium ulceration risk and/or considered bariatric.
- OPTIONAL: Cut the mattress corners for better adaptability to beds

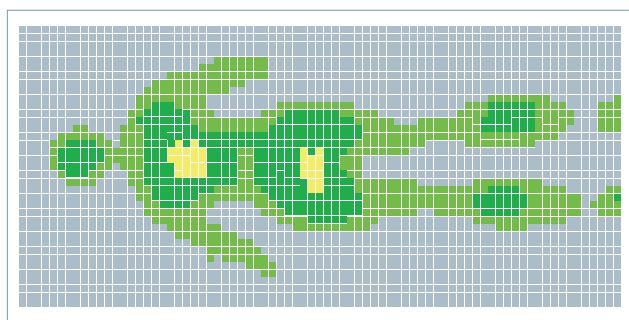
+ Pressure map

The contact pressure test shows that a Model user keeps in contact most parts of the body, no matter in the whatever position is taken, consequently there is a large contact surface between the mattress and the user, avoiding high pressure points that may cause pressure ulcers (bedsores).

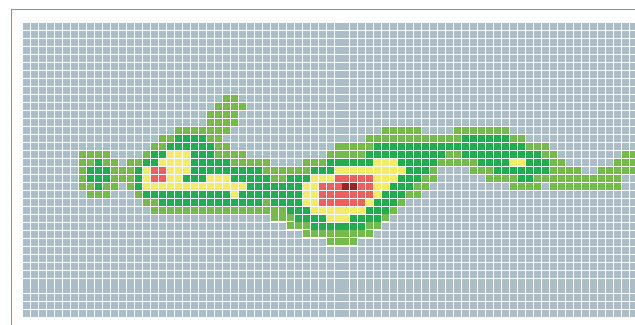
The test proved that it is a perfect mattress to use with bariatric patients, due to its firmness and patient adaptability.

In positions such as supine or Fowler, the medium pressure showed didn't exceed 10 mmHg.

In other positions, lateral or seated, the Model reached the highest maximal because on those positions it is easier that the hip and shoulders become more flagged

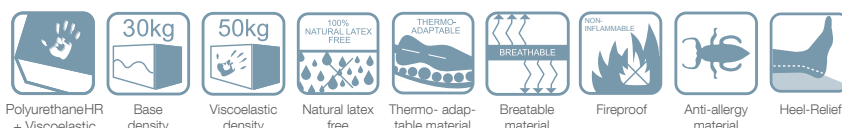
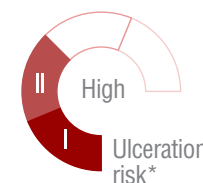


Gender: Female. Weight: 95kg. Height: 170cm.



Gender: Female. Weight: 95kg. Height: 170cm.

DENSITY 650 FRESH



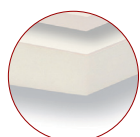
+ Mattress characteristics

Sandwich type mattress for high ulceration patient, laying in bed for at least 15 hours per day, as well as for mitigate pressure ulcers or sores in medium stage.

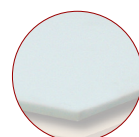
+ Technical specifications

Core weight	8'5 kg.	Ulceration risk	II - High
Core height	15 cm.	Available widths	80/85/90/105 cm.
Maximum patient weight (MPW)	250 kg.	Available lengths	180/190/200 cm.

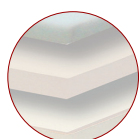
+ Core



1. HR polyurethane foam, freefoam (30 kg/m³) with open cells, that allows the air circulation through the foam, with a great breathability; Height 10 cm.



3. Upper layer in Rafrechi® (50 kg/m³) viscoelastic foam, as well as the intermediate one, but in this case the foam is refreshed for a greater breathability and to avoid patient maceration; 2 cm. height.



2. Intermediate layer on thermofoam viscoelastic (50 kg/m³) with 3 cm height, which improve the adaptation capability to the patient and his comfort.

+ Core characteristics



- Mattress base framed, for optimal bed core adaptability, when the bed sections are articulated.
- Fireproof core according to the “Furniture and Furnishings (Fire)”, BS 5852:2 CRIB2, UNE EN 597-1 and EN 597-2 regulations.
- Heel-Relief area slightly decreased down area, to prevent the pressure increase this area and avoiding the pressure ulcers generation.
- All foams are Oeko-Tex class I and REACH certified.
- OPTIONAL: Cut the mattress corners for better adaptability to beds.

+ Pressure map

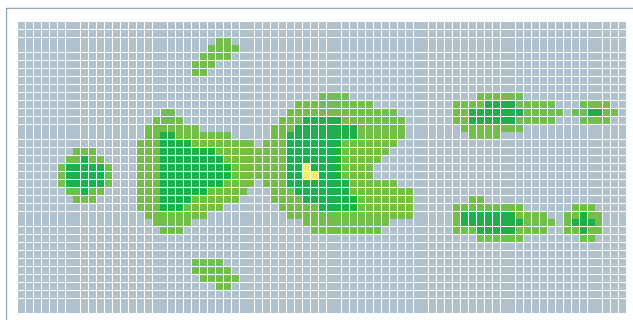
The contact pressure test shows that a Model user keeps in contact most parts of the body, no matter in the whatever position is taken, consequently there is a large contact surface between the mattress and the user, avoiding high pressure points that may cause pressure ulcers (bedsores).

The test prove that it is a mattress ideal to be used with long term bed-ridden patients, as it is very comfortable and adapted to the patient.

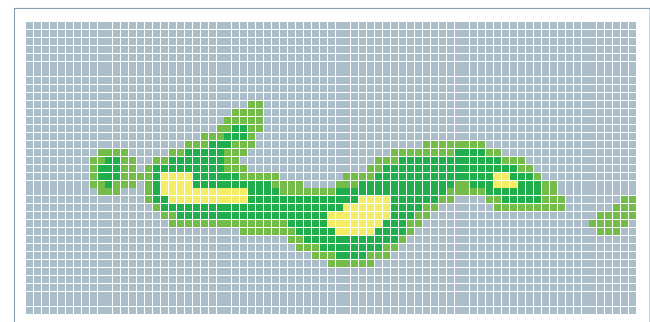
In positions such as supine or Fowler, the medium pressure showed didn't exceed 6 mmHg.

In other positions, lateral or seated, the Model didn't overcome 8 mmHg. on average, but it could be observed in the graphics the highest pressure points (20 mmHg.) on hip and shoulders areas.

Furthermore, for a greater patient comfort, this mattress is designed to be use preferably with phenolic bed bases.

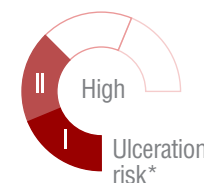


Gender: Female. Weight: 65kg. Height: 170cm.



Gender: Female. Weight: 65kg. Height: 170cm.

DENSITY 600



+ Mattress characteristics

Sandwich type mattress for high ulceration patient, laying in bed for at least 15 hours per day, as well as for mitigate pressure ulcers or sores up to grade III.

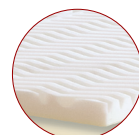
+ Technical specifications

Core weight	8'5 kg.	Ulceration risk	II - High
Core height	16 cm.	Available widths	80/85/90/105 cm.
Maximum patient weight (MPW)	250 kg.	Available lengths	180/190/200 cm.

+ Core



1. HR polyurethane foam (38 kg/m³), 8 cm. Height. Its high porosity allows a great air circulation through the foam.



2. Intermediate layer made of HR polyurethane foam with more density (42 kg/m³) with 4 cm height, which provide more comfort and stability.

3. Thermo-sensitive viscoelastic foam (50 kg/m³) with 4 cm height for the upper layer. In contact with the body, the viscoelastic foam turns softer, keeping the same supporting level and endowing an excellent comfort levels.

+ Core characteristics



- Upper layer conformed with different patterns, divided in 5 sections, depending in patients pressure areas, to improve the blood circulation and pressure of the patient.
- Mattress base framed, for an optimal adaptability of the mattress core.
- Transversal frame in the upper side of the base, for better patient comfort, increases core elasticity.
- All foams are Oeko-Tex class I and REACH certified.
- Symmetric core allows using indistinctly the head or feet areas.
- OPTIONAL: Cut the mattress corners for better adaptability to beds.

+ Pressure map

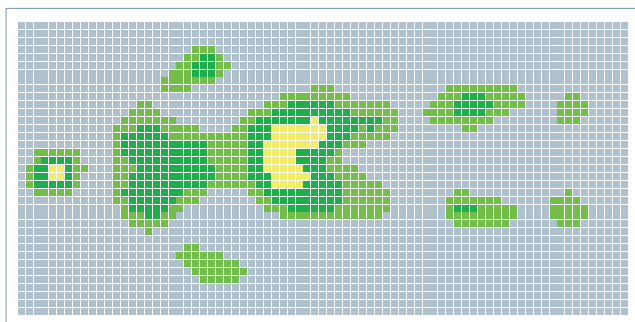
The contact pressure test shows that a Model user keeps in contact most parts of the body, no matter in the whatever position is taken, consequently there is a large contact surface between the mattress and the user, avoiding high pressure points that may cause pressure ulcers (bedsores).

The test prove that it is a mattress ideal to be used with long term bed-ridden patients, as it is very comfortable and adapted to the patient.

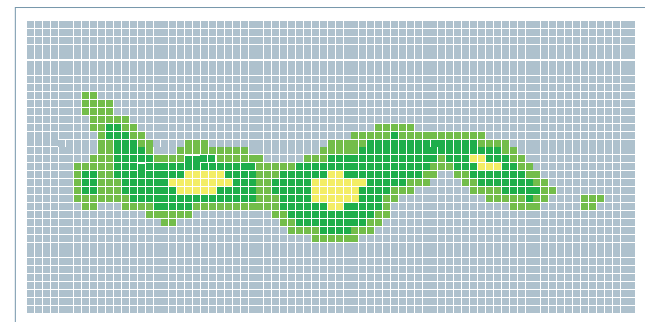
In all tested positions (supine, lateral, Fowler and seated) on this mattress the user didn't exceed the medium pressure showed 10 mmHg.

It could be observed in the graphics the highest pressure points (23 mmHg.) on hip, sacral and shoulders areas.

Furthermore, for a greater patient comfort, this mattress is designed to be use preferably with phenolic bed bases.

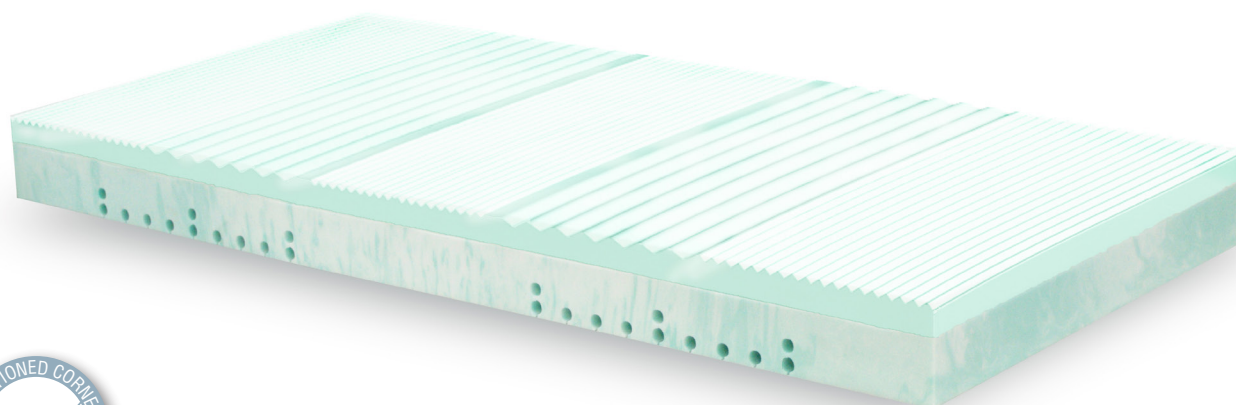


Gender: Female. Weight: 65kg. Height: 170cm.

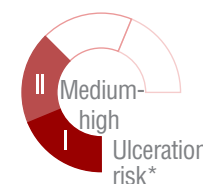


Gender: Female. Weight: 65kg. Height: 170cm.

DENSITY 475 FRESH



230kg MPW



Standard Therapeutic

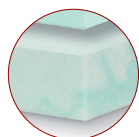
+ Mattress characteristics

Specially designed mattress to be used in hospital and health centres, for patients with medium-high ulceration risk, as well as for mitigate pressure ulcers or sores in medium stage.

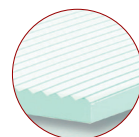
+ Technical specifications

Core weight	10 kg.	Ulceration risk	II-III/Medium-High
Core height	15 cm.	Available widths	80/85/90/105 cm.
Maximum patient weight (MPW)	230 kg.	Available lengths	180/190/200 cm.

+ Core



1. High density polyurethane, Biogreen, foam based core (31 kg/m³). Made of vegetal origin natural products, renewable and non-polluting. 10 cm. height.
Biogreen is composed by open micro cells, which provide maximum breathability.



2. Upper layer made of high density (50 kg/m³) MF viscoelastic. Bio, which combines the Biogreen foam properties and the MF foam. Mind Foam (slow memory and high density viscoelastic foam, with a wrap around effect). 5 cm height.
Enhanced core with Aloe Vera extracts that provide freshness.

(*) According to Norton scale of ulceration Grade III.

+ Core characteristics



- Upper layer conformed with different patterns, divided in 5 sections, depending in patients pressure areas, to improve the blood circulation and pressure of the patient.
- Mattress base framed, for optimal bed core adaptability, when the bed sections are articulated.
- Microperforations made in the viscoelastic layer, to provide greater mattress breathability.
- Comfortable, ergonomic and non-deformable.
- All foams are Oeko-Tex class I and REACH certified.
- Symmetric core allows using indistinctly the head or feet areas
- OPTIONAL: Cut the mattress corners for better adaptability to beds.

+ Pressure map

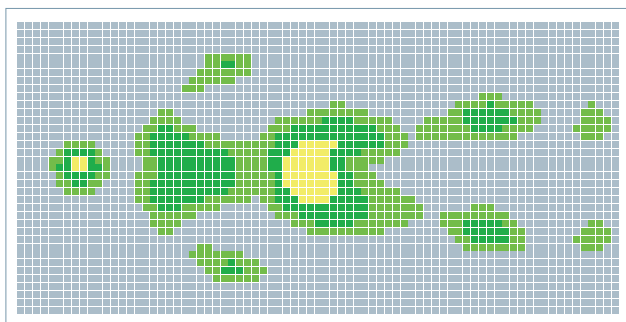
The contact pressure test shows that a Model user keeps in contact most parts of the body, no matter in the whatever position is taken, consequently there is a large contact surface between the mattress and the user, avoiding high pressure points that may cause pressure ulcers (bedsores).

The test prove that it is a mattress ideal to be used with long term bed-ridden patients, as it is very comfortable and adapted to the patient.

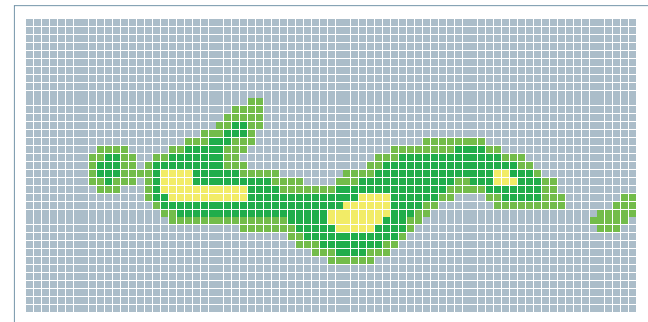
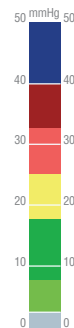
In positions such as supine or Fowler, the medium pressure showed didn't exceed 12 mmHg.

In other positions, lateral or seated, the Model didn't overcome 15 mmHg. on average, but it could be observed in the graphics the highest pressure points (23 mmHg.) on hip, sacral and shoulders areas.

Furthermore, for a greater patient comfort, this mattress is designed to be use preferably with phenolic bed bases.

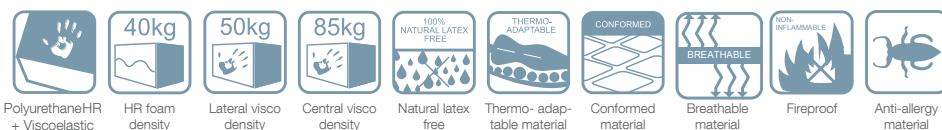
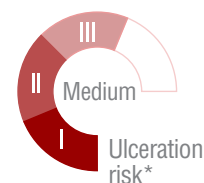
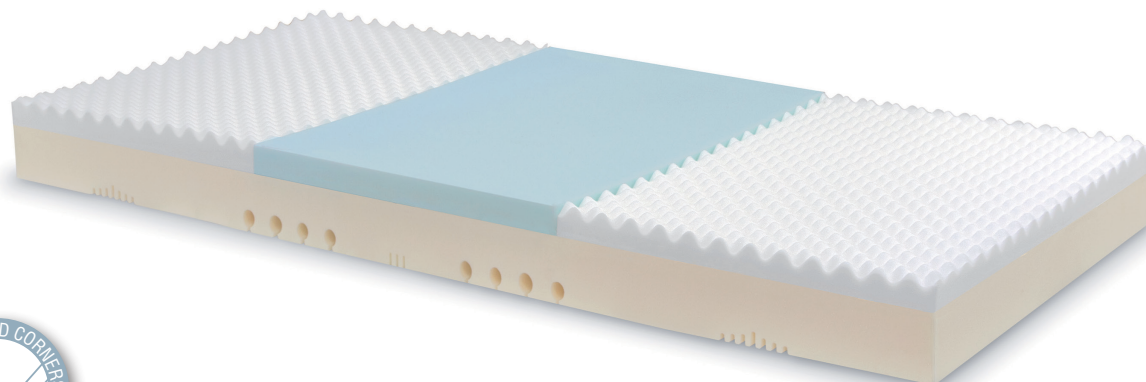


Gender: Female. Weight: 65kg. Height: 170cm.



Gender: Female. Weight: 65kg. Height: 170cm.

DENSITY 450



+ Mattress characteristics

Specially designed mattress to be used in hospital and health centres, for patients with medium ulceration risk or for patients with ulcers or sores up to grade II.

+ Technical specifications

Core weight	10 kg.	Ulceration risk	III - Medium
Core height	15 cm.	Available widths	80/85/90/105 cm.
Maximum patient weight (MPW)	230 kg.	Available lengths	180/190/200 cm.

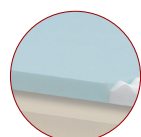
+ Core



1. HR polyurethane foam (40 kg/m³), with 10 cm. thick. Its high porosity allows a maximal air circulation inside the core.

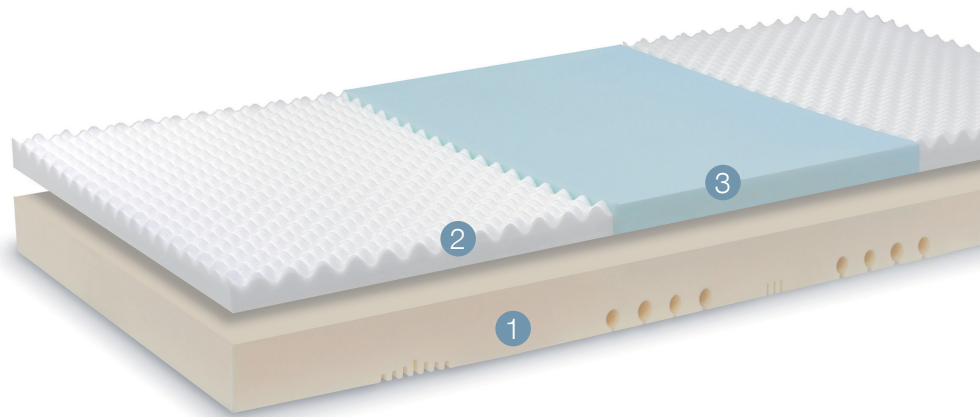


2. Upper layer divided in three sections: head, lumbar and feet. The head and feet sections are made of thermo-sensitive viscoelastic foam (50 kg/m³), 5 cm. height.



3. The central third is reinforced with a Viscoelastic foam with superior hardness (85 kg/m³), which provides higher resistance to subsidence, ensuring a total ergonomic posture. 5 cm. height.

+ Core characteristics



- Core designed to offer a grater firmness in the body area with more patient weight: lumbar area. Both framed mattress ends, to facilitate the blood circulation and patient comfort.
- Adaptation capacity of the thermo-sensitive core, achieve a greater contact surface than a standard mattress, obtaining low capillary occlusion rates and preventing the PU's appearance.
- Framed inferior layer, in 5 sections, for better adaptability and movement of

the sections.

- Fireproof core according to “Furniture and Furnishings (Fire)”, BS 5852:2 CRIB2, UNE EN 597-1 and EN 597-2 regulations.
- All foams are Oeko-Tex class I and REACH certified.
- Symmetric core allows using indistinctly the head or feet areas
- OPTIONAL: Cut the mattress corners for better adaptability to beds.

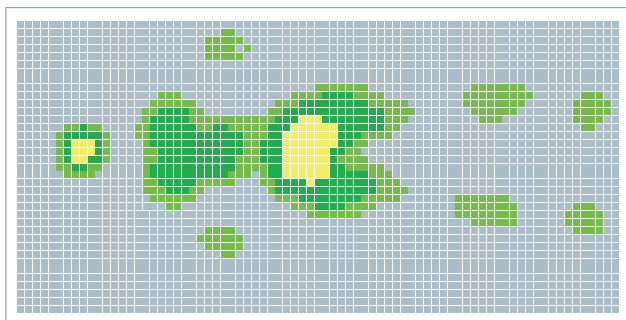
+ Pressure map

The contact pressure test shows that a Model user keeps in contact most parts of the body, no matter in the whatever position is taken, consequently there is a large contact surface between the mattress and the user, avoiding high pressure points that may cause pressure ulcers (bedsores).

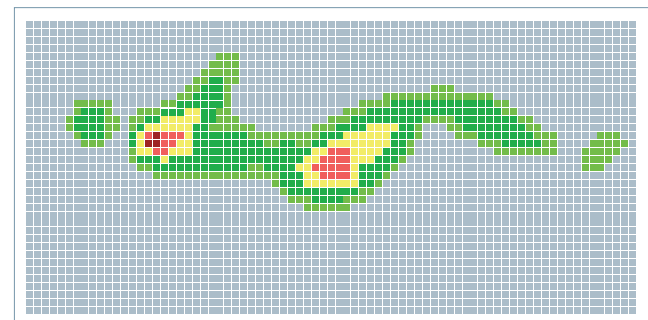
The test prove that it is a mattress ideal to be used with long term bed-ridden patients, as it is very comfortable and adapted to the patient.

In positions such as supine or Fowler, the medium pressure showed didn't exceed 20 mmHg.

In other positions, lateral or seated, the Model was on 30 mmHg. on average.

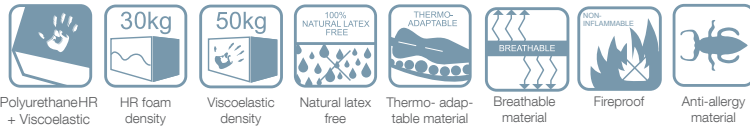
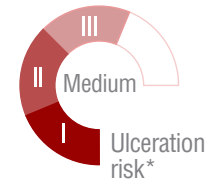


Gender: Female. Weight: 65kg. Height: 170cm.



Gender: Female. Weight: 65kg. Height: 170cm.

DENSITY 400 i



+ Mattress characteristics

Specially designed mattress to be used in hospital and health centres, for patients with medium ulceration risk or for patients with ulcers or sores up to grade II.

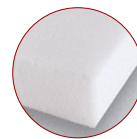
+ Technical specifications

Core weight	7 kg.	Ulceration risk	III - Medium
Core height	14 cm.	Available widths	80/85/90/105 cm.
Maximum patient weight (MPW)	230 kg.	Available lengths	180/190/200 cm.

+ Core



1. Core with two layers, base with HR polyurethane foam base freefoam (30 kg/m³). 9 cm. height. Due to its porosity, allows a high breathability and hygiene.



2. Upper layer made of high density thermo sensible viscoelastic foam (50 kg/m³) which increases the patient adaptation capacity reaching low capillary occlusion levels, avoiding the PU's appearance; 5 cm. height.

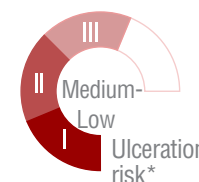
+ Core characteristics

- Framed lower mattress layer for an optimal patient pressure whilst he is placed in bed. High adaptability of the mattress to the bed, promoting its articulation..
- Fireproof core according to the "Furniture and Furnishings (Fire)", BS 5852:2 CRIB2, UNE EN 597-1 and EN 597-2 regulations.

- All foams are Oeko-Tex class I and REACH certified.
- Symmetric core allows using indistinctly the head or feet areas.
- OPTIONAL: Cut the mattress corners for better adaptability to beds.



DENSITY 400



+ Mattress characteristics

Specially designed mattress to be used in hospital and health centres, for patients with medium-low ulceration risk or for patients with medium grace ulcers or sores.

+ Technical specifications

Core weight	6,5 kg.	Ulceration risk	III / Medium-Low
Core height	14 cm.	Available widths	80/85/90/105 cm.
Maximum patient weight (MPW)	230 kg.	Available lengths	180/190/200 cm.

+ Core



1 Core with two layers, base with HR polyurethane foam base freefoam (28 kg/m³). 9 cm. height. Due to its porosity, allows a high breathability and hygiene.



2 Upper layer made of high density thermo sensible viscoelastic foam 50 kg/m³; 5 cm. height. The Viscoelastic foam increases the patient adaptation capacity reaching low capillary occlusion levels, avoiding the PU's appearance.

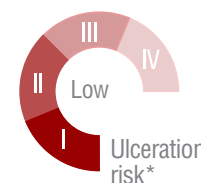
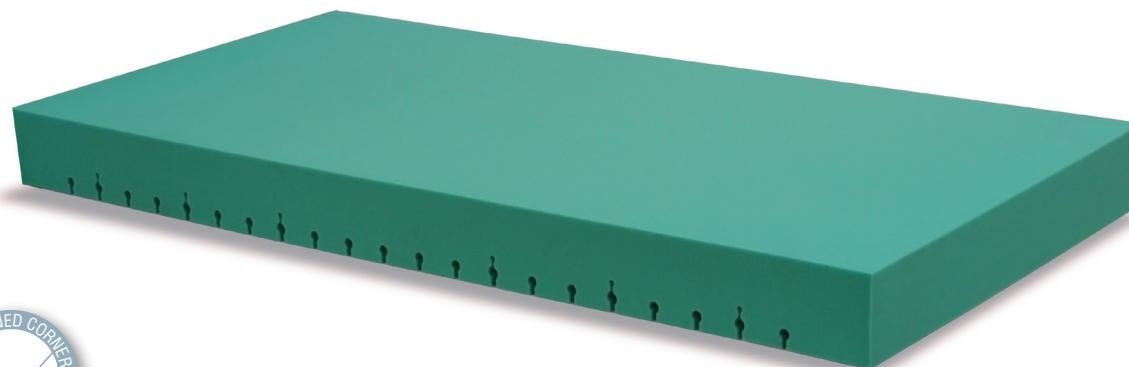
+ Características del núcleo

- Framed lower mattress layer for an optimal patient pressure whilst his bed placement. High adaptability of the mattress to the bed, promoting its articulation..
- Suitable for patients with medium-low ulceration risk and not considered bariatric.

- All foams are Oeko-Tex class I and REACH certified.
- Symmetric core allows using indistinctly the head or feet areas.
- OPTIONAL: Cut the mattress corners for better adaptability to beds.

(*) According to Norton scale of ulceration Grade II.

DENSITY 250 FRESH



+ Mattress characteristics

Specially designed mattress to be used in hospital and health centres, for patients with low ulceration risk and for the treatment of early stage ulcers or sores.

+ Technical specifications

Core weight	8 kg.	Ulceration risk	III-IV / Low
Core height	15 cm.	Available widths	80/85/90/105 cm.
Maximum patient weight (MPW)	190 kg.	Available lengths	180/190/200 cm.

+ Core



1. High resiliency ecologic Biocell foam (32 kg/m³), made of vegetal origin natural products (specifically soya), renewable and non-polluting; with a height of 15 cm. thick.

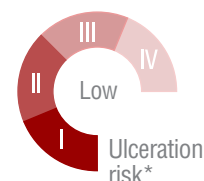
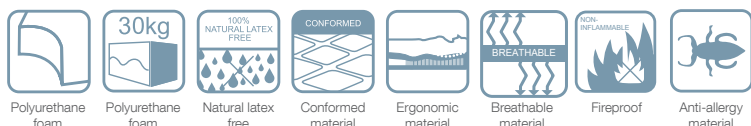
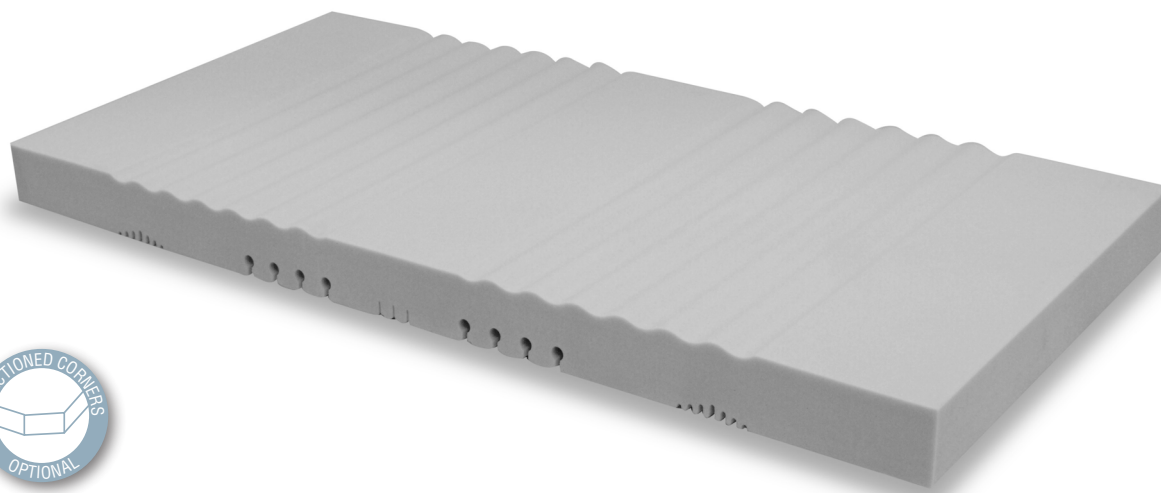
Core is composed by open micro cells, obtained from open seeds, ensuring a maximal breathability.

+ Core characteristics

- Framed lower mattress layer for an optimal patient pressure whilst his bed placement. High adaptability of the mattress to the bed, promoting its articulation.
- Totally ergonomic, keeps the body in his natural curved position, relieved, preventing the back and cervical pain.
- All foams are Oeko-Tex class I and REACH certified.
- Symmetric core allows using indistinctly the head or feet areas
- OPTIONAL: Cut the mattress corners for better adaptability to beds.



DENSITY 150



+ Mattress characteristics

Specially designed mattress to be used in hospital and health centres, for patients with low ulceration risk or for mitigate up to grade I pressure ulcers or sores.

+ Technical specifications

Core weight	7'5 kg.	Ulceration risk	IV - Low
Core height	14 cm.	Available widths	80/85/90/105 cm.
Maximum patient weight (MPW)	190 kg.	Available lengths	180/190/200 cm.

+ Core



- 1 High resilience polyurethane foam (30 kg/m³), which open cells structure, AIRFLOW system and mattress perforations, provide a high lightness; 14 cm. thick.

High performance AIRFLOW system, it allows a great adaptability and breathability

+ Core characteristics

- Corrugated upper layer, surface divided in 5 sections. The corrugated areas are placed in the shoulders and hips sections, to improve the progressive adaptability of the patient.
- Framed inferior layer , in 5 sections, for better adaptability and movement of the sections
- Fireproof core according to the "Furniture and Furnishings (Fire)", BS 5852:2 CRIB2, UNE EN 597-1 and EN 597-2 regulations.
- All foams are Oeko-Tex class I and REACH certified.
- Symmetric mattress allows using indistinctly the head or feet areas.
- OPTIONAL: Cut the mattress corners for better adaptability to beds.

(*) According to Norton scale of ulceration Grade I.

DENSITY 100 NEO



+ Mattress characteristics

Specially designed mattress to be used in incubators in hospital facilities. For neonatal with the correct weight, but medium ulceration risk.



+ Mattress properties

- High density monolithic foam core (30 kg/m^3), with open cell structure that improve the air exhaust allowing greater breathability and avoiding the humidity accumulation, preventing the dust mites growth.
- Dimensions $60 \times 40 \times 6 \text{ cm}$.
- Maximum patient weight: 12 kg.

DENSITY 100 PEDIATRIC



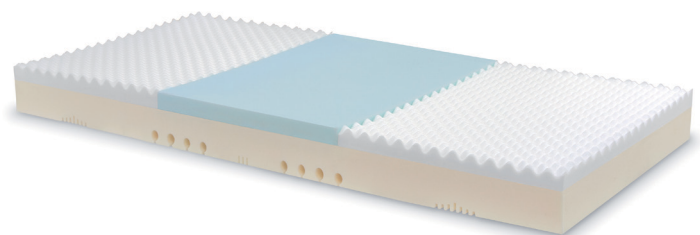
+ Mattress characteristics

Specially designed mattress to be used in pediatric beds in hospital facilities. For children with medium ulceration risk.

+ Mattress properties

- High density monolithic foam core (30 kg/m^3), with open cell structure that improve the air exhaust allowing greater breathability and avoiding the humidity accumulation, preventing the dust mites growth.
- Dimensions $60 \times 120 \times 10 \text{ cm}$.
- In optimal conditions the mattress supports up to 40 kg.

DENSITY 450 PEDIATRIC



+ Mattress characteristics

Specially designed mattress to be used in pediatric beds in hospital facilities. For children with medium-high ulceration risk.

+ Mattress properties

- HR polyurethane foam (40 kg/m^3), with 8 cm. thick. Its high porosity allows a maximal ventilation inside the core.
- Upper layer divided in three sections: head, lumbar and feet. The head and feet sections are made of viscoelastic foam (50 kg/m^3) and the central section with a higher density thermo-sensible viscoelastic (85 kg/m^3). Altogether has 2 cm. height.
- Dimensions $60 \times 120 \times 10 \text{ cm}$.



COVERS

CUGAR



+ Cover composition

100% bielastic fabric cover, tissue made of polyester (60%) with fire retardant polyurethane coating (40%).

Intended to protect the mattress, complying with the most exigent technical and quality features in all fields.



Two-way stretch



Waterproof



Breathable



Fireproof



Anti-allergy



Disinfectable and sterilizable



Easy cleaning

+ Cover characteristics

- Tissue made with two threads with same size in warp and ultrasound made.
- High elongation cover in welt (153%) and warp (139%), acquiring a bielastic high character, avoiding tissue wrinkles.
- High resilience fabric longitudinal tensile strength, 380 N and 253 N transversal.
- 175 g/m² weight.
- Waterproof fabric, it can support at least 200 cm. water column.
- Water vapour breathable cover, minimum 500 g/m²/24hours.

- This cover complies with the fireproof regulation BS7175 CRIB 5.
- Free of dangerous compounds and chemicals products: Lead, mercury, PBB. According to RoHs and REACH regulations.
- The fabric has Oeko-Tex, class I certification.
- Resistant to autoclave sterilization at 134°C.
- Heat-sealed zipper
- L or U shape zipper options, with or without long way flap.

+ Washing instructions



Machine washable with 2% warp and 1'5% weft shrinkage.



Machine washable at 95°C maximum temperature.



Medium temperature tumble drying.



Medium temperature ironing, only on the outside of the fabric.



Do not use chlorinated or whiteners, just soapy water.



Dry cleaning supported but trichloroethylene.



SELECT



+ Cover composition

100% bielastic fabric cover, tissue made of polyester (52%) with fire retardant polyurethane coating (48%).

Intended to protect the mattress, complying with the most exigent technical and quality features in all fields.

+ Cover characteristics

- Weld knitted fabric, forming a grid with an only thread interwoven in a circular way, ultrasonic sewed.
- High elongation cover in weft (153%) and warp (139%), acquiring a bielastic high character, avoiding tissue wrinkles.
- Due to the fabric confection this tissue has a high resistance to transversal tensile strength (333 N).
- Bielastic character, due to the circular interwoven, which allows 154% longitudinal and 126% transversal elongation.
- 190 g/m2 weight.

+ Washing instructions



Machine washable with 2% warp and 1'5% weft shrinkage.



Machine washable at 95°C maximum temperature.



Medium temperature tumble drying.



Two-way stretch



Waterproof



Breathable



Fireproof



Anti-allergy



Disinfectable and sterilizable



Easy cleaning

- High waterproof fabric, it can support at least 500 cm. water column.
- Water vapour breathable cover, minimum 1000 g/m2/24hours.
- This cover comply with the fireproof regulation BS7175 CRIB 5 M1.
- The fabric has Oeko-Tex, class I certification, as well as antibacterial and anti-fungal according to ISO 846:1997.
- Environmentally friendly, biocompatible in grade I according to ISO 10993-5 and complying with PHTHALATE FREE certification.
- Resistant to autoclave sterilization at 120°C.
- L or U shape zipper options, with or without flap.



Medium temperature ironing, only on the outside of the fabric.



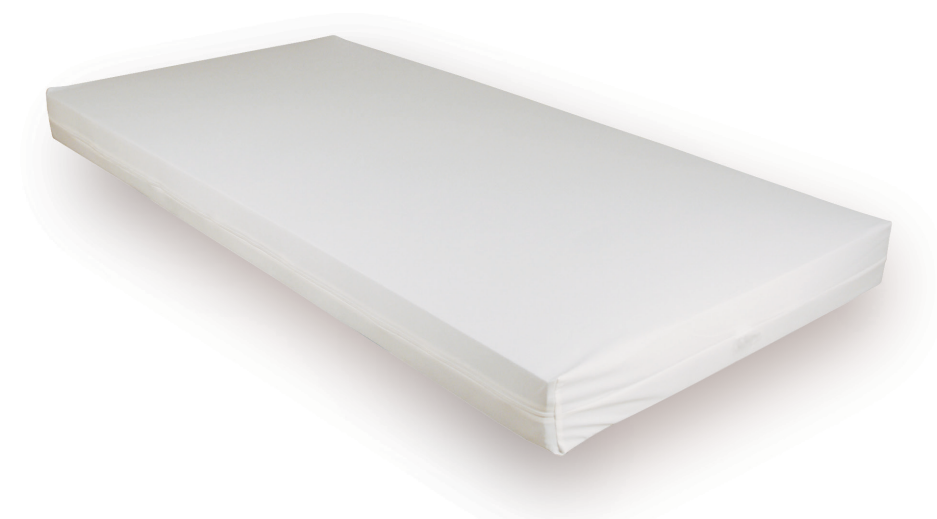
Do not use chlorinated or whiteners, just soapy water.



Dry cleaning supported but trichloroethylene.

Available for all static mattress and pillows

EXCLUSIVE



+ Cover composition

Elastic fabric cover, tissue made of polyester (38%) with fire retardant polyurethane coating (62%).

Intended to protect the mattress, complying with the most exigent technical and quality features in all fields.



+ Cover characteristics

- Plain knit fabric, characterized for a smooth and uniform surface in the front and rough surface in the reverse side.
- Easy to stretch out in the longitudinal direction.
- Low weight fabric 160 g/m².
- Waterproof cover, it can support at least 180 cm. water column
- Water vapour breathable cover, minimum 1000 g/m²/24hours at 37°C.
- This cover the mattress complies with the fireproof regulation UNE EN 597-1 y UNE EN 597-2.

- Antibacterial and antifungal tissue.
- The fabric has Oeko-Tex, class I certification.
- L or U shape zipper options, with or without flap

+ Washing instructions



Machine washable with 3% warp and 2% weft shrinkage, it is possible to use disinfectants quaternary ammonium based.



Machine washable at 95°C maximum temperature.



Normal temperature tumble drying.



Low temperature ironing, only on the outside of the fabric.



Do not use chlorinated or whiteners, just soapy water.

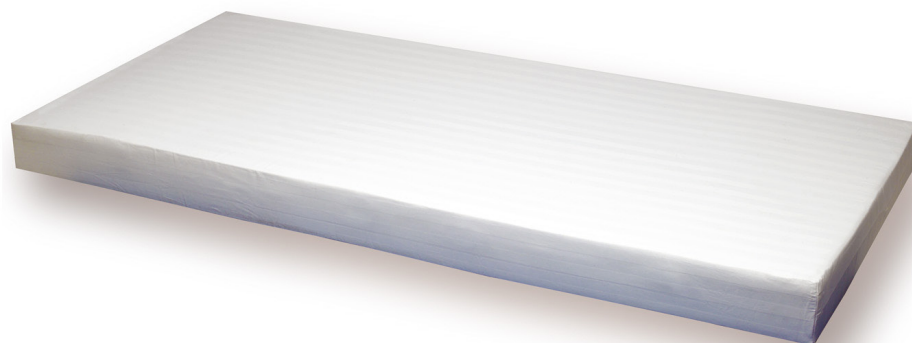


Do not dry clean.



CE

ELEGANCE



+ Cover composition

Striped polycotton, made of polyester (50%) and cotton (50%).
Intended to protect the mattress, complying with the most exigent technical and quality features in all fields.



+ Cover characteristics

- S/500 satin stripe fabric, whose mesh is made of 28 threads 30 1/C polyester and cotton, in equal quantities, in warp and 12 threads 7 1/C polyester and cotton in equal quantities, in weft.
- Very adjustable, long-lasting and versatile fabric.
- 188 g/m² weight.
- Very soft and light touching and less susceptible to shrinking, wrinkles and static electricity.
- The fabric has Oeko-Tex, Class I certification, as well as antibacterial and anti-fungal under ISO 846:1997 standard.
- Resistant to autoclave sterilization.
- Optional long length L or U zipper shape.

+ Washing instructions



Machine washable with a shrinkage rate 1'5€ in both warp and weft.



Machine washable at maximum 60°C.



It can be centrifuged.



Low temperature ironing just on the tissue side.



Chlorinated or whiteners products can be used



It is preferable to do dry cleanings to keep the tissue intact.

Available for all static mattress and pillows



PILLOWS



CE

SYNTHETIC FIBRE



+ Characteristics of the pillow

Synthetic fibre pillows for a firm support, perfect for people that likes to sleep incorporated.

Great breathability as by allowing an inner air circulation.

VISCOELASTIC



+ Characteristics of the pillow

Memory foam core pillow, characterised by its excellent adaptation and term-sensitivity properties.

Provide great support and promotes the adaptability to the neck, eliminating pressures and cervical problems.

LATEX



+ Characteristics of the pillow

The Latex pillow allows a medium/high firmness creating a deep comfort sense.

Its structure enable more ventilation, hygiene and durability due to the inner open cell structure.

PEDIATRIC



+ Characteristics of the pillow

The, high resilience, HR polyurethane foam extra-slim pillow, allows the child breathing through it, even upside down.

Core with two cotton covers: internal and external, both with zipper to facilitate the cleaning.

PARDO AROUND THE WORLD



- Saudi Arabia
- UAE
- Jordan
- Kuwait
- Qatar
- Lebanon
- Syria
- Egypt
- Pakistan
- Irak
- Iran
- Morocco
- Dem. Rep. of Congo
- Senegal
- Angola
- Libya
- Ghana
- Algeria
- Tunisia
- South Africa
- Mexico
- Colombia
- Ecuador
- Peru
- Chile

- Argentina
- USA.
- Brasil
- Panamá
- St. Lucia
- Dominican Republic
- Cuba
- Paraguay
- Venezuela
- India
- Thailandia
- Indonesia
- Portugal
- Serbia
- United Kingdom
- Lithuania
- Latvia

- Malta
- Russia
- Poland
- Romania
- Greece
- Spain
- France
- Italy





TAKING CARE FROM
THE BEGINNING

HEADQUARTER & FACTORY
Polígono Centrovía
C/ Los Ángeles 5,
50198 La Muela, Zaragoza (Spain)
Tel.: (+34) 976 300 033 · Fax: (+34) 976 320 647
export@pardo.es
www.pardo.es

pikolin
grupo